

- + **Health**
- + **Community Services**

course guide

2020



 **cobdenhealth**
Health & Wellbeing for Life



Health + Community Services

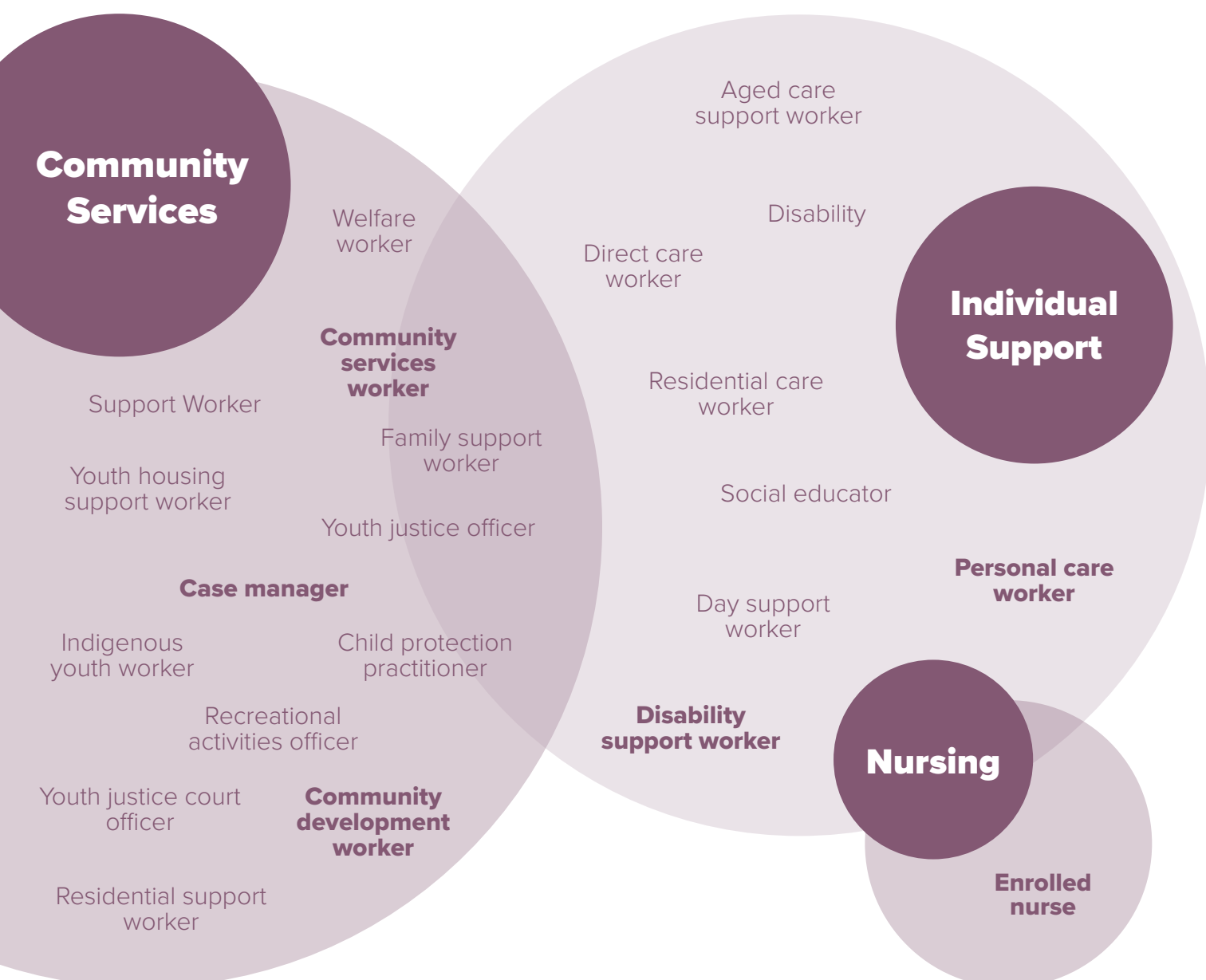
The demand for qualified workers in the health and community services sector is rapidly growing.

This is identified as one of the top four industries for growth over the next five years.* Now is the perfect time to build yourself a rewarding and personally satisfying new career.

Comprehensive training mixed with placement opportunities provide health and community services graduates with real sought-after experience and skills.

Collaborative partnerships, including Warrnambool's Lyndoch Living, ensure on-site training and first-hand experiences, as well as potential employment opportunities.

*www.joboutlook.gov.au/FutureOfWork





JANELLE DARCY

DIPLOMA OF NURSING

“I have always had a passion for nursing but when I finished year 12 I didn’t have the opportunity to pursue this dream.

I had children and worked as a dental nurse and then a veterinary nurse before the time was right to return to study.

Before I started the Diploma of Nursing at South West TAFE I enrolled in Certificate III in Individual Support. Once I completed this course I was able to gain employment at Cobden District Health and work within the industry the whole time I was studying which was a massive advantage.

When I finished my diploma I was employed as an enrolled nurse at Cobden before I gained a graduate position at St John of God Healthcare in Ballarat.

I am now working in the medical and oncology wards there and I just love it. I’m learning so much from them all.”

how to apply

There are six simple steps to apply for a course with us.

Apply for a SWTAFE course

1 ATTEND AN INFORMATION SESSION

At these sessions you can find out more about the courses, career opportunities, placement requirements and chat with a course specialist. Find upcoming dates for information sessions at swtafe.edu.au/infosessions

2 APPLY

Visit swtafe.edu.au to apply.

Click the [Apply Now](#) button on either the home page or on a specific course page. You will need to fill out a short online application form. Once this form is submitted we'll send you a thank-you email.

3 GET READY

Your thank-you email will contain three things:

1. A link to our Pre-Training Review to help us tailor your training. Please note this may include a supervised on-campus session.
2. A link to set up your unique student identifier (unless you already have one)
3. A link to find out if you may be eligible for government-subsidised training

You may be contacted by our Skills and Jobs Centre for an interview.

4 CHAT WITH YOUR TEACHER

You will be contacted by a teacher or course specialist to organise a time for an interview.

5 ENROL

If you have been successful in gaining a place you will receive a letter of offer and an email containing:

1. Your enrolment form which you can fill out online.
2. A link to verify your identification.

6 SIGN

Once you've completed your enrolment form and verified your identification you will receive your student declaration form to review and sign. You can sign this digitally via your smartphone, computer or tablet.

If you need assistance with enrolling, contact our Customer Service team on 1300 648 911 or visit your nearest campus.

Traineeships in Health and Community Services

Traineeships allow you to combine training with full-time or part-time work, so that while learning on the job you get the necessary formal qualification. They allow you to combine paid work with training. Once an employer has been found, we will work with them to deliver and assess your training.

Visit swtafe.edu.au for more information

Free TAFE courses in 2020

Free TAFE gives more people a chance to get the skills they need to land a job that's in demand.

Free TAFE covers tuition fees for students who are eligible for government-subsidised training. If you don't meet the eligibility criteria you may qualify for an exemption to receive a Free TAFE place in 2020.

There may still be costs that you will be required to pay, such as course materials, uniform, excursions, books etc.

FREE TAFE

The Free TAFE courses are found throughout this guide – just look for this symbol.

*Terms and conditions apply.
See swtafe.edu.au for further info
about Free TAFE courses.*



industry partnership Lyndoch Living

Studying to work in the individual support industry doesn't get any more real than the South West TAFE/ Lyndoch Living Training Initiative.

Over six months students get a first-hand taste of their future careers in individual support while completing the industry-based Certificate III in Individual Support.

The course, run by South West TAFE with its industry partner Lyndoch Living, is the first in the region to be based entirely on-site, providing practical on-the-job experience and training for students.

The training is tailored to current industry standards and can accommodate up to 40 students in two intakes.

South West TAFE has strong industry partners across all nursing and community services which gives students the opportunity to increase their knowledge during regular work placements.

South West TAFE can be your pathway to uni

If university is on your radar you can start your studies with us via a diploma course which can gain you credits for future study at university.

Commencing your studies with TAFE before heading to university has great benefits:

- You can gain credits for entry to university
- Reduce the number of units you need to complete your university degree
- Greatly reduce the time and cost to complete a university qualification
- You'll be job-ready before starting university, giving you the flexibility to work and learn
- You'll finish with not one, but two qualifications.

TAFE has connections with many universities so you can easily transition from TAFE training on to a university degree. South West TAFE has a formal agreement with Deakin University for direct entry to university from some of our diploma courses. Diploma of Community Services students may receive relevant credits and a pathway to the Bachelor of Social Work.

The Diploma of Nursing provides guaranteed entry into the Bachelor of Nursing at Deakin University Warrnambool Campus.





TANYA MCDONALD

DIPLOMA OF COMMUNITY SERVICES

“My life has completely changed since starting a Diploma of Community Services at South West TAFE.

The course appealed to me as I felt it was my time to give back to the local services that have provided me with so much support in the past.

Before I started the diploma, I worked as a dairy herd manager, bookkeeper and in administration for Kirrae Health Services.

I’m now the board chair of Kirrae Health Services and also spend time mentoring young girls and taking part in the Aboriginal dance group.

I was thrilled to be awarded the Koorie Student of the Year at South West TAFE’s Graduation and Awards ceremony in March and then go on to win the Koorie Student of the Year at the Victorian Training Awards.

I am now working at South West Healthcare where I’m completing the organisation’s Reconciliation Action Plan.

I love what I do and my plans are to continue to develop my skills and eventually I want to work at a policy level where I can have a real impact on my community and beyond.”

COMMUNITY SERVICES

Certificate III in Community Services CHC32015 **FREE TAFE**

LOCATION Colac, Hamilton, Portland and Warrnambool campuses
DURATION Full-time, nine months. Three days a week (two days in class and one day of self-directed study online)
START DATE February

This qualification provides an entry point to community services to work under supervision. Graduates may find work in community service organisations, however the Certificate III in Community Services is intended as a pathway course to further qualifications.

Certificate IV in Child, Youth and Family Intervention CHC40313 **FREE TAFE**

LOCATION Warrnambool campus
DURATION Full-time, one year. Three days a week
START DATE February, July

This qualification reflects the role of those who work in youth and family intervention, including practice specialisations in residential and out-of-home care, family support and early intervention. Workers operate under a broad supervision framework and within clearly defined organisational guidelines, service plans and position specifications.

Diploma of Community Services CHC52015 **FREE TAFE**

LOCATION Warrnambool campus
DURATION Full-time, two years. Three days a week, including some evening classes
START DATE February, July (day and evening classes)
APPLICATION Selection by group interview

This qualification gives you the tools and knowledge needed to provide a range of services and interventions to clients within the community services sector. This course includes industry experience where you will gain knowledge and skills working with individuals, groups and whole communities, through more than 400 hours of work placement. This is an Australian Community Workers Association (ACWA) accredited course. This course offers a wide range of employment opportunities upon graduation in a large range of contexts.

DISABILITY

Course in Introduction to the National Disability Insurance Scheme 22469VIC

LOCATION Colac, Hamilton, Portland and Warrnambool campuses and Stawell
DURATION Part-time, six weeks. One day a week
START DATE Expressions of interest are currently being taken. This course will run dependent on numbers

This course is for people new to the disability sector and provides a pathway to further qualifications. It provides an overview to direct support work, the National Disability Insurance Scheme (NDIS) and working with an NDIS participant. This accredited unit may be utilised as an elective in several other community service qualifications.

FREE TAFE

Free TAFE course in 2020, see page 4.

Certificate IV in Disability CHC43115 **FREE TAFE**

LOCATION Colac, Hamilton, Portland and Warrnambool campuses
DURATION Full-time, one year. Two days a week
START February

This qualification reflects the role of workers in a range of community settings and clients' homes, who provide training and support in a manner that empowers people with disabilities to achieve greater levels of independence, self-reliance, community participation and wellbeing. Workers promote a person-centred approach, work without direct supervision and may be required to supervise and/or coordinate a small team. This course includes industry experience with 120 hours of work placement.

Certificate IV in Disability (Traineeship) CHC43115 **FREE TAFE**

LOCATION Workplace training
DURATION One to two years
START DATE Apply any time

This traineeship will provide you with the hands-on skills to assist people with disabilities. You will learn how to offer individualised support to people through on-the-job training and real experience in a range of community settings and clients' homes.



CHARLES COWELL CERTIFICATE IV IN DISABILITY

"I had previously worked in farming and driving trucks for a waste management company.

The Certificate IV in Disability appealed to me as I had always volunteered in the community and I was looking for a new career path that combined what I love - helping people.

I love my career change because it gives me the opportunity to work with people helping them to enhance their own lives. Every day is rewarding.

Since starting my studies I now have a new understanding of what's involved in the profession and I've learnt a lot of new skills.

I'm now working part-time at Gen U and I love working with people and seeing positive outcomes. I love seeing people being able to live a more rewarding life."

INDIVIDUAL SUPPORT

Certificate III in Individual Support **FREE TAFE** CHC33015

LOCATION Colac, Hamilton, Portland and Warrnambool campuses
DURATION Nine months. Two days a week
START DATE Colac, Hamilton and Portland: February, July
Warrnambool: February, April, July, October

The Certificate III in Individual Support (formerly Aged Care and Home and Community Care) is an entry-level qualification to work within the aged care, disability or home and community care sectors. This course gives you practical experience in providing person-centred support to people who may require it due to ageing, disability or illness. This course includes 120 hours of work placement.

Certificate III in Individual Support (Traineeship) CHC33015 **FREE TAFE**

LOCATION Workplace training
DURATION One to two years
START DATE Apply any time

Gain practical skills enabling you to make a difference in people's everyday lives with this traineeship. You will learn the foundations of support that can be applied in a range of settings from residential aged care facilities to other community-based services. This course gives you practical experience in providing person-centred support to people who may require it due to ageing, disability or illness.

NURSING

Diploma of Nursing HLT54115 **FREE TAFE**

LOCATION Hamilton and Warrnambool campuses
DURATION Full-time, two years. Three days a week
START DATE February
APPLICATION Compulsory information session, literacy and numeracy assessment and interview

The Diploma of Nursing provides the skills and knowledge to work as a competent enrolled nurse, working within their scope of practice to provide quality nursing care in a variety of community and healthcare settings.

Successful completion of this course leads to registration with the Australian Health Practitioner Regulation Agency (AHPRA). This course includes industry experience with 440 hours of work placement.

The Nursing and Midwifery Board of Australia (NMBA) has introduced an admission requirement that assesses a student's English language skills. View the English language skills requirements on the Registration Standards page of the Nursing Midwifery Board website.

This English language requirement must be demonstrated prior to entry into the Diploma of Nursing and you will be asked to complete documentation during the application process.

As the qualification also leads to registration with the Australian Health Practitioner Regulation Agency (AHPRA), applicants are also expected to comply with all the requirements set by AHPRA upon graduation. Visit the AHPRA website for the English Language Skills and Criminal History Registration Standards on the Registration Standards page.

FREE TAFE

Free TAFE course in 2020, see page 4.

short courses

We offer a range of short courses to assist you to further your skills. Each course is practical and professional and will deliver the skills you're seeking. Our short courses are easy to fit into your busy lifestyle.

- Provide First Aid*
- Grief and Loss
- Introduction to Art Therapy
- Provide Cardiopulmonary Resuscitation*
- Aboriginal and Torres Strait Islander Mental Health
- Introduction to Basic Counselling
- Standard Mental Health First Aid
- Stress Management
- Trauma and Residential Support Skills

* These courses include accredited training. Visit our website for unit of competency details.

For a full list visit
swtafe.edu.au/shortcourses



WARRNAMBOOL CAMPUS

197-205 Timor Street
WARRNAMBOOL VIC 3280

SHERWOOD PARK, WARRNAMBOOL

Princes Highway (Deakin University)
WARRNAMBOOL VIC 3280

HAMILTON CAMPUS

200 Ballarat Road
HAMILTON VIC 3300

PORTLAND CAMPUS

154 Hurd Street
PORTLAND VIC 3305

COLAC CAMPUS

89 Bromfield Street
COLAC VIC 3250

GLENORMISTON TRAINING FACILITY

333 Glenormiston Road
GLENORMISTON SOUTH VIC 3265



1300 648 911
swtafe.edu.au